



Dunkstar[®]

DIY courts for your home

**QUICK NET
ADJUSTMENT SYSTEM**

Introduction

Congratulations on your purchase of a Dunkstar Quick Net Adjustment System! Here you will find instructions for how to properly set up your system and get to enjoying the sports you love.

Please review all instructions in full prior to assembly to familiarize yourself with the installation process.

If you have concerns regarding installing this equipment safely, please contact Dunkstar at 1-888-861-7546 for technical support.

Parts Included:

4 x J-Bolt Assembly



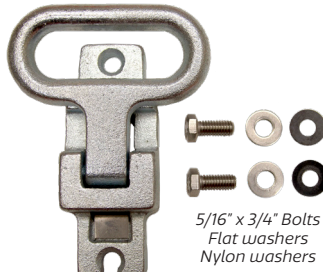
Threaded J-bolts
3/8" Nuts
Flat washers
Nylon washers

4 x J-Bolt Assembly



Threaded eyebolts
3/8" Nuts
Flat washers
Nylon washers

2 x Foot Peg Assembly



Convertible
foot pegs

5/16" x 3/4" Bolts
Flat washers
Nylon washers

2 x Cable clamps



1 x Bag of plastic plugs



4 x Snap links



1 x Rope
handle clamp



2 x Wire cable
ferrules



1 x Large
rope lock



2 x Small
rope locks



Equipment Required:

The following items will be necessary for a complete installation of your Quick Adjustment Net System. References made in this guide will be for the tools outlined below:

- Tape measure
- 1/2" (13 mm) Open-end wrench
- 9/16" (14 mm) Open-end wrench
- Cable cutter
- Adjustable wrench
- 1/2" (13 mm) Socket and driver
- Phillips screw driver
- Utility knife

Note: Refer to Illustration A on the second to last page for installation overview.

Part 1: Hoop side/fixed pole side

1. Assemble four (4) J-bolt assemblies by threading a 3/8"-16 nut on each J-bolt, followed by a flat washer, then a nylon washer.
2. Screw the four (4) J-bolt assemblies into the Dunkstar basketball pole in the four (4) pre-drilled hole locations. Secure the J-bolt assemblies with the 9/16" (14 mm) wrench. An adjustable wrench helps keep the J-bolt aligned vertically while tightening.

Note: If utilizing two (2) net poles and not a basketball pole for the net system, install J-bolt assemblies on the pole that is furthest from the court access.

Note: Each net pole will have an additional hole at 39" and 42". Disregard these hole locations and fill with Plastic Plugs.

3. If the foot peg does not come pre-installed on the basketball pole, attach the foot peg to the back side of the pole with the 5/16"-18 x 3/4" bolts and flat washers, oriented as shown below in **Figure 1**. Secure with the 1/2" (13 mm) wrench or socket.

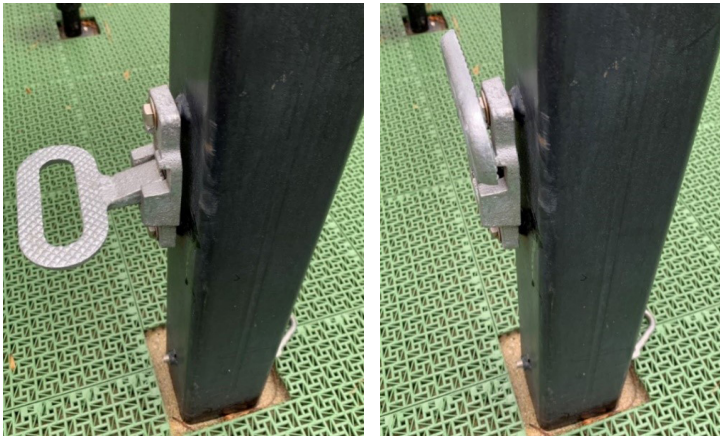


Figure 1: Foot Peg orientation on net pole. Extended (left) and collapsed (right).

Part 2: Adjustable pole side

1. Assemble four (4) eyebolt assemblies by threading a 3/8"-16 nut on each eyebolt, followed by a flat washer, then a nylon washer.
2. On the pole opposite the pole with J-bolts, install the eyebolt assemblies at 36", 62", 88", and 96" locations. Tighten with a 9/16" (14 mm) end wrench.
3. Attach foot peg to the back side of the pole with the 5/16"-18 x 3/4" bolts and flat washers. Secure with the 1/2" wrench or socket.
4. Hook the 3/8" (larger) rope lock in the 36" eyebolt location as shown in **Figure 2**, and allow about 12" - 18" of rope between the rope lock and the hook.



Figure 2: Large Rope Lock installed on the adjustable pole side and hooked onto game net cable loop with about 12" of rope between the rope lock and hook.

Part 3: Game net install and positioning

1. Attach one end of the game net cable to the J-bolt on the basketball/fixed pole at 36" as shown below in **Figure 3**. The other end of the cable will be cut and a new loop made to fit your court.



Figure 3: One end of net cable attached to the basketball/fixed pole.

2. Center the net on the court where it will be during play. The net should extend roughly an even distance past the game lines as shown in **Figure 4**. It will be necessary to cut the cable and make a new loop for your specific court. When the net is installed and pulled tight with the Rope Lock, there should be at least 12" of rope connecting the Rope Lock and game net, and the net should not sag.

Note: There is plenty of extra cable to reach the poles and center the net over the court. The excess cable will be cut and removed in the next steps.



Figure 4: Game net centered over area of net sports play.

3. Be sure to allow enough cable to maintain about 12" to 18" of rope between the cable loop and the pole. You will need to cut the cable with suitable cable cutter and make a new loop at the end with the two (2) enclosed aluminum cable ferrules.
4. Make a loop in the cable to get the desired length, and mark where to cut. Cut cable to desired length.
5. Use a razor knife to cut around the coated area to be removed. Remove enough to complete steps 7 and 8 (see **Figure 5**). Use extreme caution so as not to injure yourself or little helpers.
6. When clean, slide the two ferrules onto the cable and make a loop by inserting back through open holes in both ferrules.
7. With a crimper or hammer, crimp both ends of each ferrule to secure the loop. When finished, the loop should look like **Figure 5**.

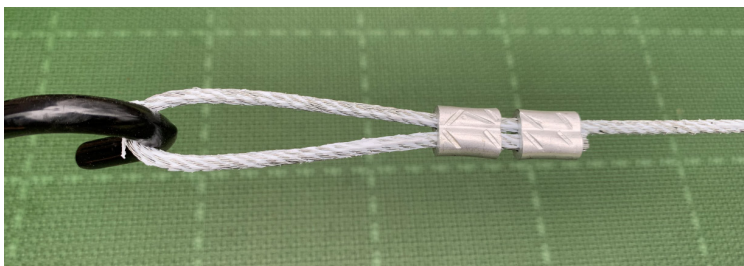


Figure 5: Finished custom loop on game net cable. Ferrules installed and crimped.

8. Attach large Rope Lock to eyebolt and the new cable loop on the game net (see **Figure 2**). The other end of game net should be on opposing J-bolt.
9. Pull the rope tail through the Rope Lock until the net is taught. Ensure the net is still centered and secure it to the cable with the enclosed cable clamps using Phillips head screw driver. These keep the net from sliding on the net cable. See **Figure 6**.

Note: Install one clamp, pull the net taught and install the second clamp.



Figure 6: Cable clamp installed to secure net in position on the cable.



Figure 7: Loop handle created using Rope Handle Clamp.

10. Use the Rope Handle Clamp to create a loop handle on the tail end of the large Rope Lock as shown in **Figure 7**.
11. Loosen the rope tension by pressing the black button on the Rope Lock. The assembly can then be attached to the net height location of your choosing.

Part 4: Net bottom tensioner installation

1. Attach a Snap Link through each grommet in the bottom corners of the net as shown in **Figure 8**.



Figure 8: Snap Link installed in net bottom grommet with Rope Lock attached.

2. Attach a Snap Link to the bottom welded eyehole of each of the hoop and the net pole(s).

3. Attach a small Rope Lock to each of the Snap Links on the bottom of the net. Connect one Rope Lock to the Snap Link on the bottom of the net pole and the other to the bottom of the hoop pole. Tighten symmetrically so the net looks like **Figure 4**.
4. The adjustable/tensioning side of the net should look like **Figure 9**.

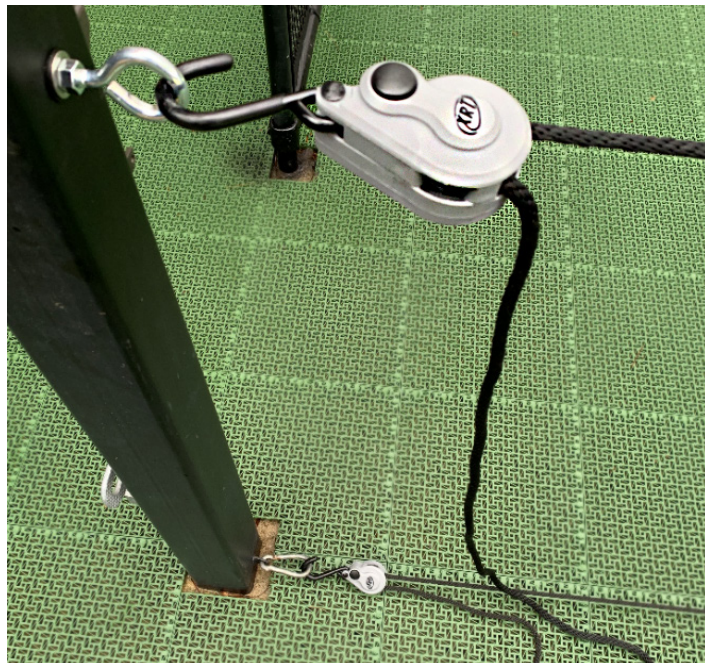
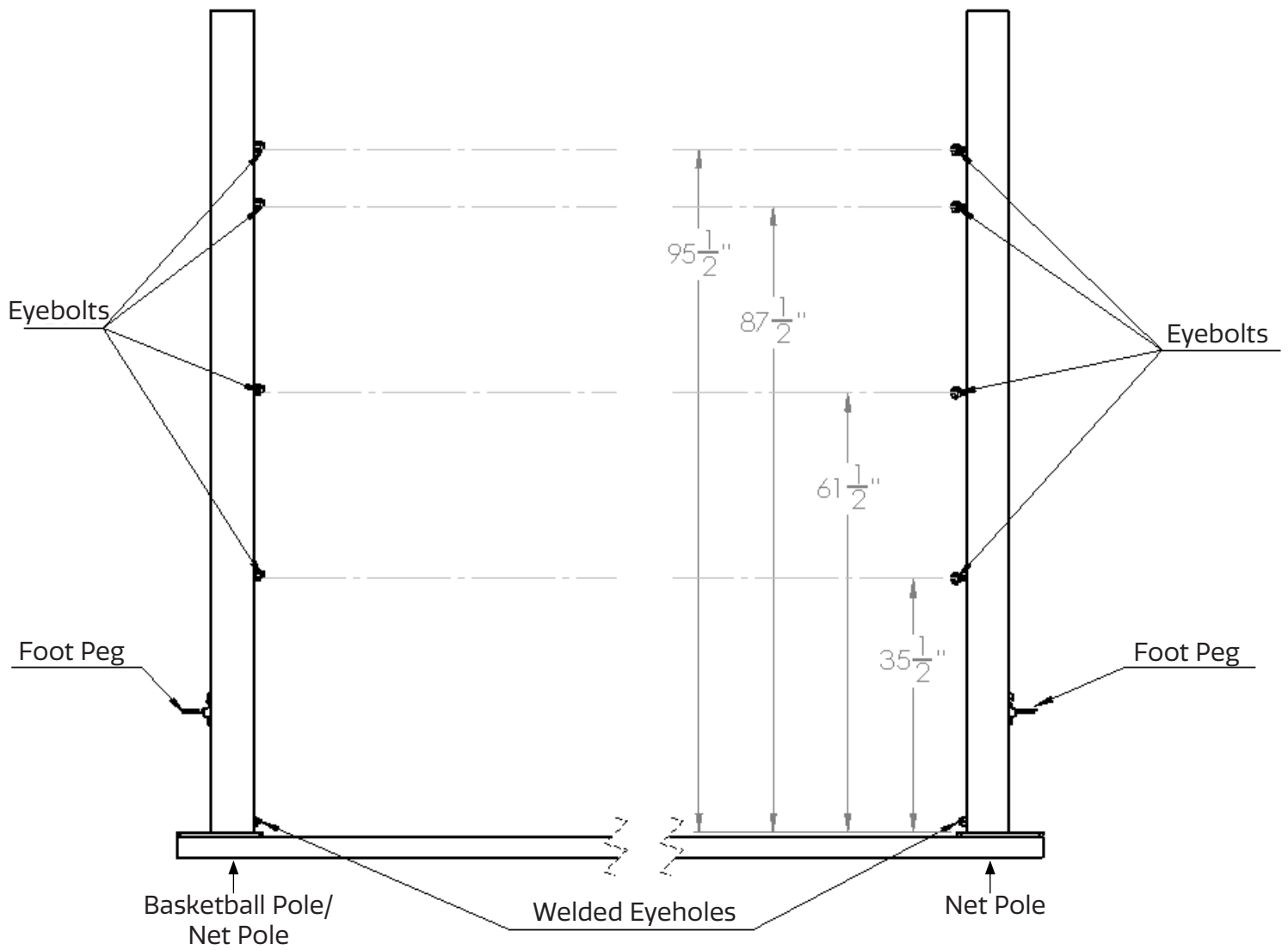


Figure 9: Large Rope Lock attached to eyebolt and small Rope Lock attached to Snap Link.

Illustration A: Installation Overview



Your Dunkstar Quick Net Adjustment system is now ready for use!

Please remember that this system is designed withstand many years of aggressive play, but it is not intended to support players who hang on the game nets. **Failure to keep players off the net will result in voiding all manufacturers' warranties.**

Thank you for choosing Dunkstar products!
We hope you love your court!



Toll Free: 1-888-861-7546
Phone: 1-801-746-7546
Fax: 1-801-746-7559